

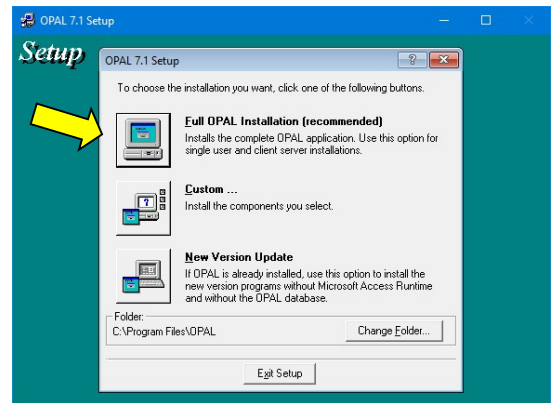
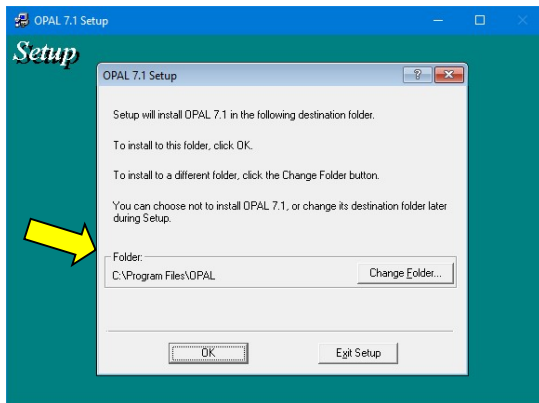


- ⓘ Please use a Windows **Administrator Usercode** to install OPAL. Detailed information for the administration and installation of OPAL are provided in the file [Readme.pdf](#) (see your OPAL installation folder). If Microsoft Access or Microsoft Office is installed on your computer, please read the note on page 2 below and the attached 3rd page.

1. OPAL-Installation

Start the file you had downloaded from DolphinsDesign.ch (e.g. OPAL72208_Setup_E.exe) with a double-click to extract and start the OPAL Setup Program (installation program). If the Windows SmartScreen prevents running the downloaded file, because Windows SmartScreen doesn't know the application and the publisher, depending on your version of Windows (e.g. Windows 10) you need to click on "More Info" and then on "Run anyway".

- In the **OPAL Setup** confirm the destination folder **C:\Program Files\OPAL** with the button **[OK]**.
- In the **OPAL Setup** choose the installation type **Full OPAL Installation (recommended)**.



- If the Windows Program Compatibility Assistant appears, confirm that "The program was installed correctly".
- Please take care not to start the downloaded program twice (WinZip Self-Extractor), to avoid the 'Setup error 825' dialogue. Possibly you need to delete the existing subfolder 'Setup' within the destination folder (e.g. C:\Program Files\OPAL\Setup).

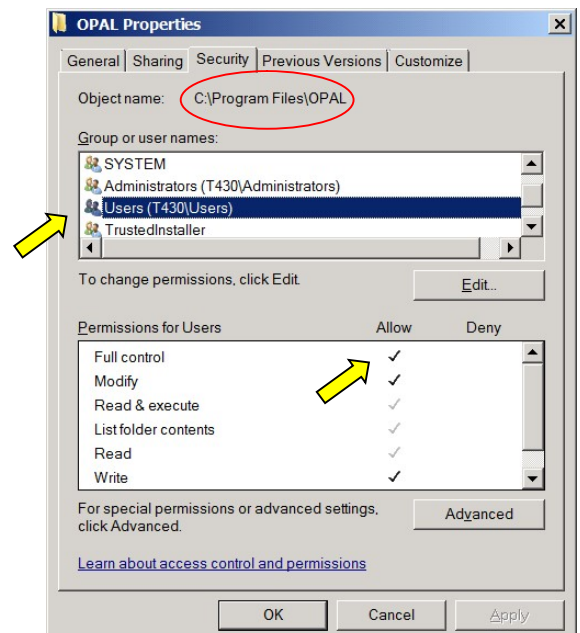
2. Permissions - Installation Folder

All users of OPAL need **full permissions** for the OPAL installation folder (e.g. C:\Program Files\OPAL) to start OPAL.

- ➔ Please check this especially when using Windows 10, 8.1, 8, 7 or Vista. Otherwise errors may occur. Please refer to the file [Readme.pdf](#) for details.

Please note that the screen copy and the following steps may vary with the installed version of Windows.

- Open the **Windows Explorer** and select the OPAL installation folder (e.g. C:\Program Files\OPAL).
- Open the context menu (right click the installation folder) and open the **Properties** for the OPAL installation folder.
- Select the tab **Security**.
- Select the entry **Users** and use the button [Edit] to set the permission to allow **Full Control**.
- Confirm your changes with **[OK]** and close the Windows Explorer.



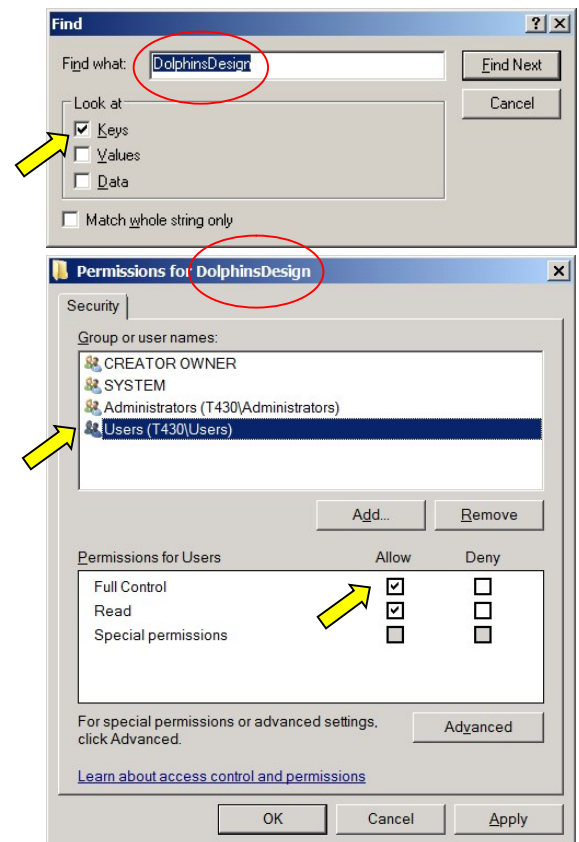
3. Permissions - Windows Registry

All users of OPAL need **full permissions** for the OPAL registry keys in the Windows Registry to start OPAL.

→ Please check this especially when using Windows 10, 8.1, 8, 7 or Vista. Otherwise errors may occur. Please refer to the file [Readme.pdf](#) for details.

Please note that the screen copy and the following steps may vary with the installed version of Windows.

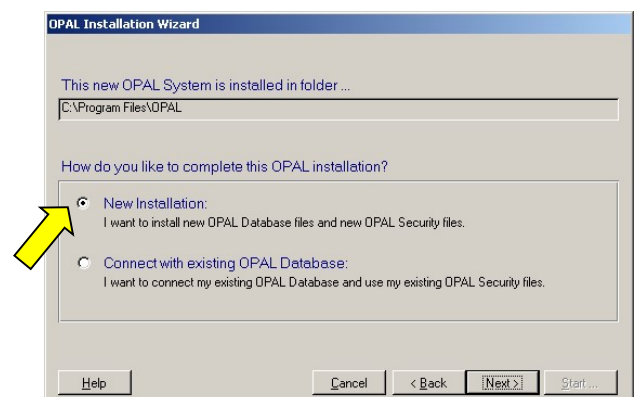
- Select 'Run...' in the Windows Start-Menu or press in Windows 10, 8.1, 8 the [Windows-Logo-Key]+[R] to open the dialogue 'Run...'. Enter **regedit** to open the **Windows Registry Editor**.
 - Open the dialogue **Find** from the menu '**Edit**' to select the key: **HKEY_LOCAL_MACHINE / SOFTWARE / ... / DolphinsDesign**
 - Open the dialogue **Permissions** from the menu '**Edit**' to edit the selected key **DolphinsDesign**.
 - Select the entry **Users** and set the permission to allow **Full Control**. Confirm your changes with **[OK]** and exit the Windows Registry.
- Please take care that you don't change any other entries in the Windows Registry. Please see the file [Readme.pdf](#) for additional information about the OPAL installation and permissions.



4. OPAL Database and Security Files

Start OPAL from the Windows menu 'Start / Programs / OPAL'.

- The **OPAL Installation Wizard** appears. Choose the language for the user interface with a click.
- Select the option **New Installation**. Click the button **[Next >>]** and choose the installation folders for the OPAL database and the OPAL security files. For Client-Server installations directly choose the folders on your server computer.

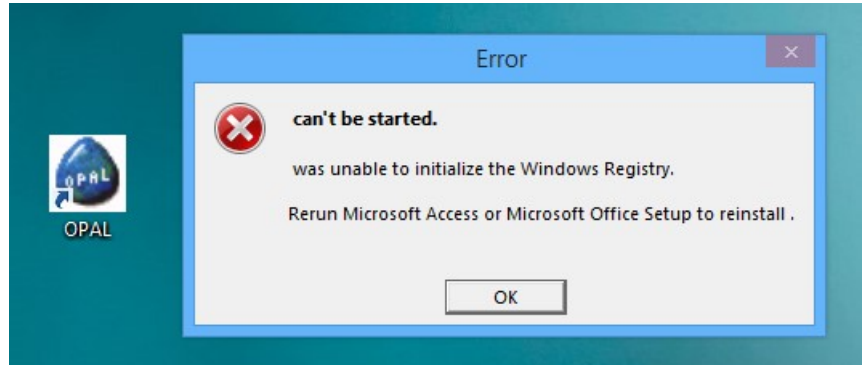


If Microsoft Access or Microsoft Office is installed ...

If an older Microsoft Access Full Version or an older version of Microsoft Access Runtime (e.g. Access 97 or Access 2000) is installed on your computer, please read the notes on [OPAL_AccessInstallationNotes_E.pdf](#) or the corresponding notes on [Readme.pdf](#) to avoid compatibility problems. If a modern version of Microsoft Access or a modern version of Microsoft Office is installed on your computer, [please read also the following information sheet](#).



Error message



If used in co-operation with Microsoft Office, upon starting **OPAL** the error message «**can't be started**» may occur (see the picture above). If this error occurs, OPAL must be started as described in the solution below. The error occurs only in some specific situations.

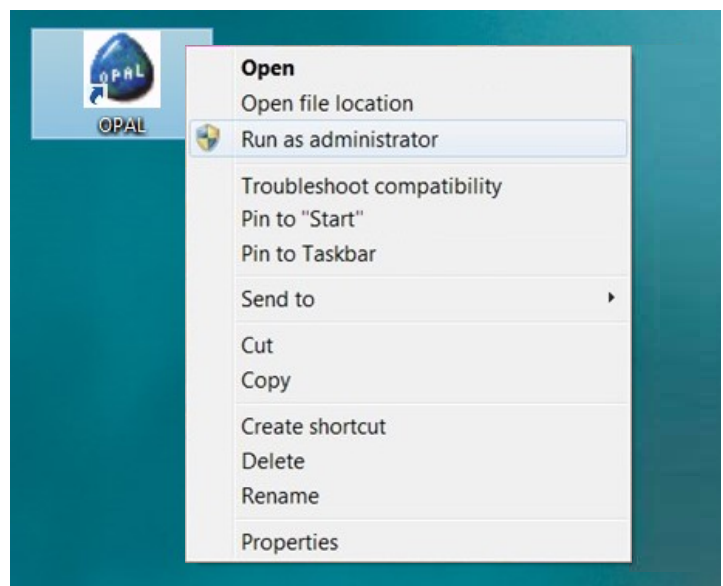
Cause:

The error is caused by the versions Microsoft Office 2007, Office 2010, Office 2013 respectively by Microsoft Access 2007, Access 2010, Access 2013. The error can be triggered by using these products as well as by installing automatic updates for these products and causes erroneous entries in the Windows Registry. The error was confirmed by Microsoft and does not occur with Microsoft Office 2016 and Microsoft Access 2016.

Solution:

The solution of this error is simple:

1. Close the error message «**can't be started**» with a click on the button **[OK]** (see the picture above).
2. With the right mouse-button click onto the Desktop-Icon **OPAL**, to display the context menu (see the picture at the right).
3. In the context menu select the function «**Run as Administrator**», to start OPAL.



If you are not an administrator for your computer (for Microsoft Windows), you will be prompted to enter the password of the Windows Administrator. If needed please ask your administrator. If you are an administrator, you can open the 'Properties' from the context menu and on the page 'Compatibility' set the option «Run this program as Administrator» permanently.

This solution is valid for all versions of OPAL and must be done on each computer, on which this error occurs. Thereby the error will be corrected automatically and OPAL will be started. Thereafter you can start OPAL normally again. We are glad to assist, if you have additional questions.